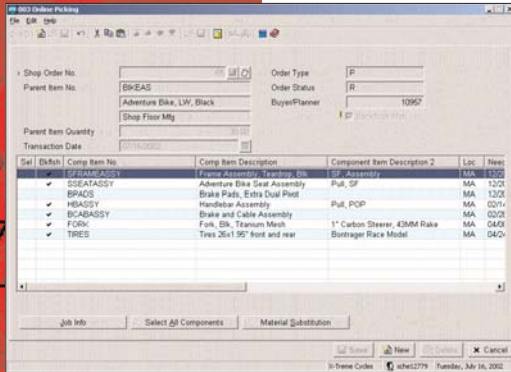




Macola ES

SHOP FLOOR CONTROL

PRECISE PRODUCTION PLANNING



The shop order entry screen lets you create shop orders in a streamlined manner and release them to the shop

Macola ES Shop Floor Control (SFC) package is designed to help manufacturers effectively manage their production floor by providing planning, visibility, expediting and comprehensive material management at the shop order level.

Benefits of Macola ES Shop Floor Control:

- Issue/return materials manually or automatically at definable operations so that inventory is tracked and managed properly
- Tracks material shortages against shop orders so that receiving has visibility of products that need to be expedited to the proper shop order and work center
- Supports KanBan and floor stock environments
- Automatically creates purchase orders for outside services with excellent integration of receiving so that operation completion is done in one step with the receipt of the purchase order
- Provides an excellent solution for non-conforming production with Material Review Board functionality, scrap handling and tracking
- Uses online picking and dispatching to save time and issue material to jobs
- Creates shop orders directly from sales orders including production comments - fulfillment of the shop order prompts the billing of the sales order
- Creates orders manually or from MRP
- Reports and tracks scrap and yield information
- Creates cost information without displaying costs to production personnel
- Flexible Inquiries in shop order status and location of goods on the shop floor
- Provides full transactional history for performance analysis
- Crew reporting is supported with the use of the Labor Performance module

Macola ES SFC module is designed with the detailed management of activities and the flow of materials inside the plant. It plans and tracks the workers, materials, tools, machines and time utilized in production so that the activities of production are visible throughout the organization to authorized users. With Macola ES SFC your company can finally manage all of the resources related to manufacturing and capture the detail to fully understand your costs and plant efficiency. Macola ES SFC is streamlined to minimize the effort required to operate while maximizing the benefit for your company.

Macola ES SFC works in a variety of environments including make-to-stock, make-to-order, engineer-to-order and batch environments.

Manufacturing Cost Accounting Interface

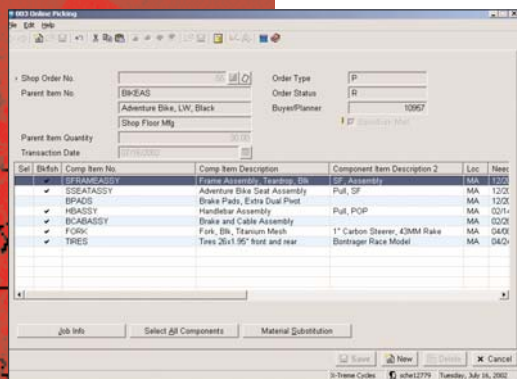
All Macola ES SFC transactions involving financial impact are recorded in the Manufacturing Cost Accounting (MCA) package (required with SFC). MCA will capture your actual costs of production and provide detailed analysis of actual costs to planned.



Macola ES

SHOP FLOOR CONTROL

PRECISE PRODUCTION PLANNING



The on-line material picking process is a quick and easy way to issue components to a shop order.

Easy Order Entry Integration

Back-orders are easily addressed with Macola ES SFC. The system makes it possible to create shop orders directly from Order Entry (O/E) for the back-ordered quantity. When completed, quantity is entered in Macola ES SFC. It then automatically updates the quantity to ship in the customer order.

Streamlined Integration with MRP

Both computer-planned and firm-planned orders can create shop orders automatically from Material Requirements Planning (MRP) into Macola ES SFC. This streamlined process provides the flexibility to apply standard routings or alternate routings to fulfill demand.

Online Picking and Dispatching

Macola ES SFC can facilitate your move to a paperless environment with online dispatchers and online, interactive material picking. These two unique interfaces allow the stock room and the scheduler to work with the system interactively, without the need to print anything.

Shop Floor Activity Reporting

Activities reported from the shop floor, machine hours and quantity completion are efficiently processed online. Labor entry processes have been designed to speed up the entry process for those sophisticated users who want to collect this data electronically through a shop data collection system.

Material Backflush and Issuing

Material can be issued against a shop order using a number of options:

- They could be backflushed at count point operations defined at the component level - different components can be relieved automatically at different operations, thus providing a great way to plan and maintain accurate WIP and storeroom inventory.
- All material can be issued up front (forward flushed) to cater to a kit issue environment.
- Material can be issued one-at-a-time for greater control.
- Material can be issued out of multiple floor locations and multiple bins. You can also issue/receive items that are serialized and lotted during activity reporting or material issuance.

Macola ES Shop Floor Control is an easy yet powerful tool to gain control of your manufacturing activities and lower costs.

More Information

For more information on Macola ES, please visit www.macola.com or call 1.800.468.0834, extension 550.

800.468.0834



www.macola.com

Boston, MA
Cambridge, ON
Columbus, OH
Fair Lawn, NJ
Fort Lauderdale, FL

Houston, TX
Los Angeles, CA
Orlando, FL
San Francisco, CA