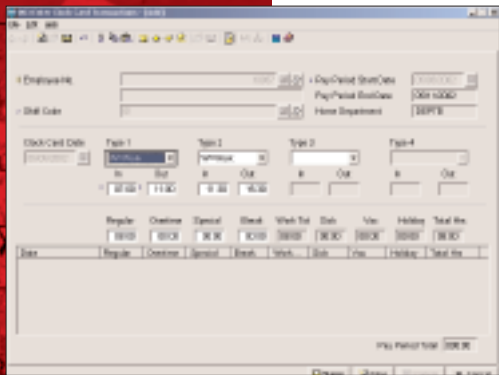




Macola ES

LABOR PERFORMANCE

WORKFORCE TRACKING FOR MAXIMUM EFFICIENCY



L/P allows you to track employee work hours more efficiently.

Labor Analysis Reports

- Employee Analysis reports analyze the performance of both the employee and the shop supervisor
- Labor History reports are used to evaluate employee performance based on efficiency, productivity and direct hours worked
- Work Center Capacity reports show how efficiently particular work centers are being used to produce products

Labor Transaction Processing

Macola ES L/P is used to enter and edit labor transactions to record the elapsed time and quantity of work completed at each operation. To minimize the volume of data entry, the module allows you to report labor by work cell or crew so that the same data does not need to be repetitively entered.

Labor transactions can be entered through Macola ES's labor transaction application, or transaction entry can be automated by integrating an electronic data collection system to Macola ES L/P via an ASCII interface. In addition to tracking labor, Macola ES L/P provides the means to track the flow of materials by shop order as work is completed through operations. In an ideal data collection system, each operation or work cell has a bar code terminal reader, where workers record starting times, ending times and the quantity completed at each operation.

Module Prerequisites

The Macola ES Shop Floor Control, Inventory Control and Manufacturing Cost Accounting modules are required to run Macola ES L/P.

Macola ES Labor Performance provides the ability to leverage your firm's most valuable asset for efficient operational control and maximum profitability.

More Information

For more information on Macola ES, please visit www.macola.com or call 1.800.468.0834, extension 550.

800.468.0834



Boston, MA
Cambridge, ON
Columbus, OH
Fair Lawn, NJ
Fort Lauderdale, FL

Houston, TX
Los Angeles, CA
Orlando, FL
San Francisco, CA